



# Bookstore Manager

## Technical Information Document

### Setting Up SCHEDULE in Windows® 8

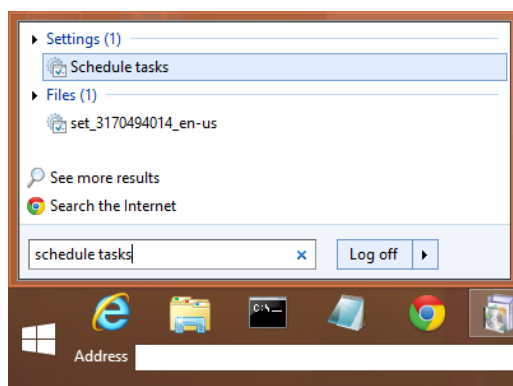
#### Document Information:

Category	Software	O/S	Windows 8	Last Modified	03/12/14
Author	JA				

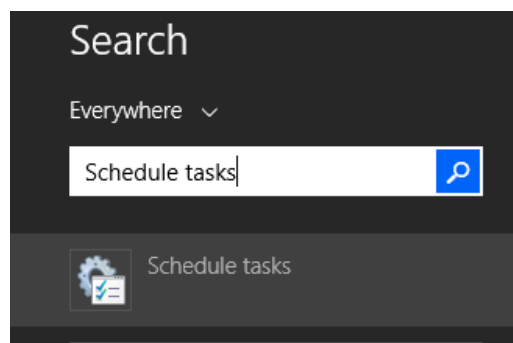
#### Document Summary

Instructions on how to setup SCHEDULE in Windows® 8 Task Scheduler. (This doc assumes that you have already done the steps for Classic Shell which are referenced in the Windows 8 Software Only docs.)

#### Document Contents

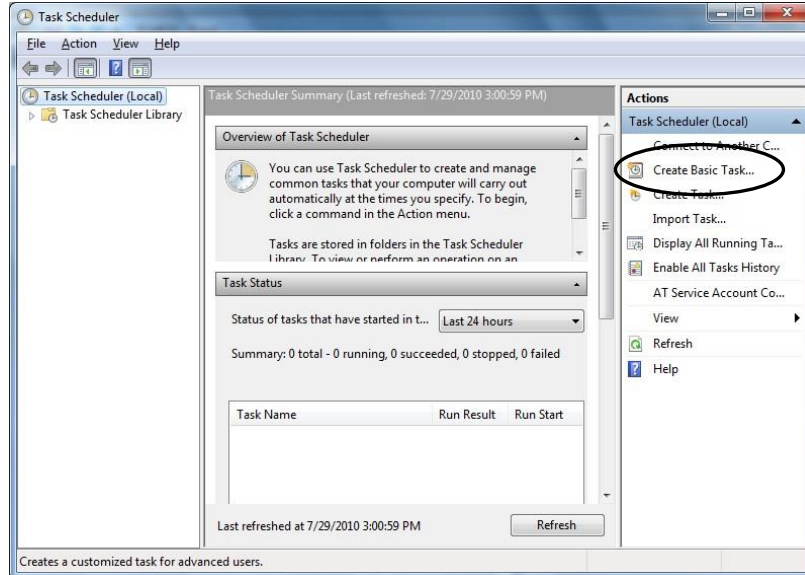


1. If you have installed Classic Shell, you can click on the Start button, then type "Schedule tasks". When you see "Task Scheduler", click it.

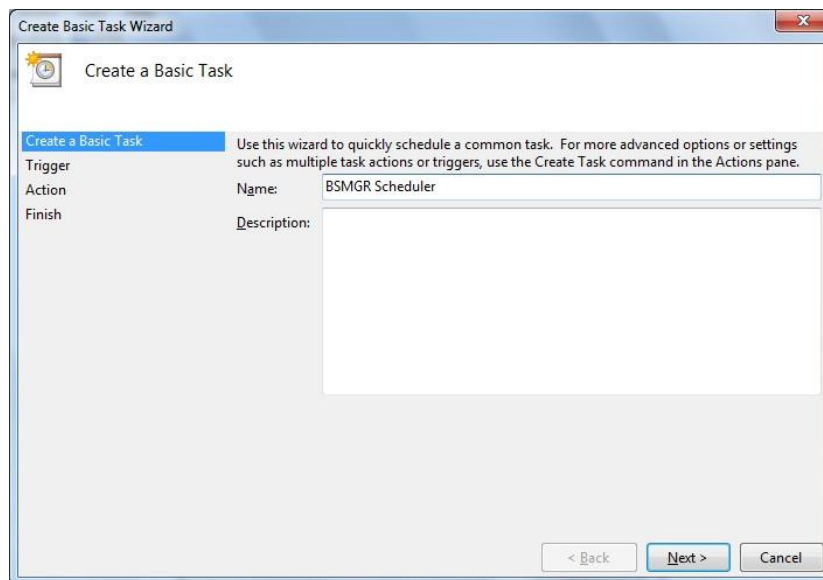


2. If you have not installed Classic Shell, you will have to then type "Schedule tasks". When you see "Task Scheduler", click it.

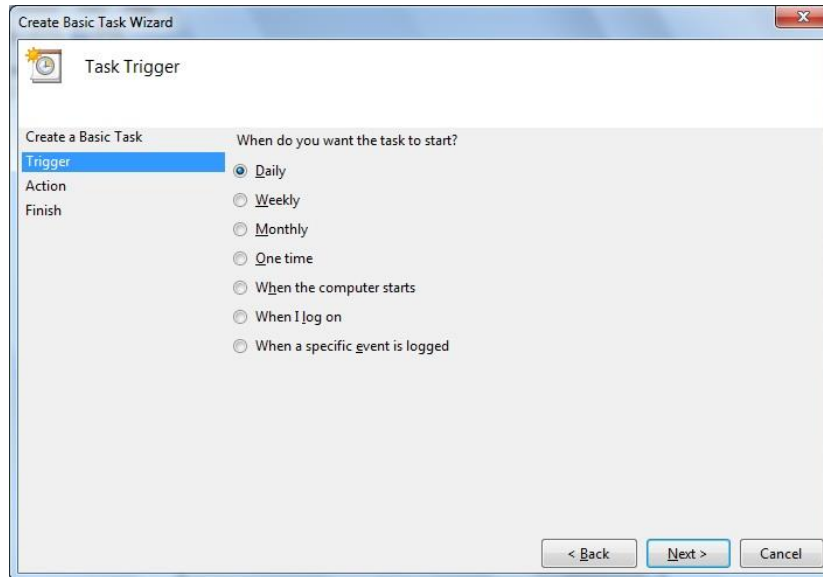
3. On the right side of the Task Scheduler, click “Create Basic Task...”.



4. For name, type “BSMGR Scheduler”, then click Next.



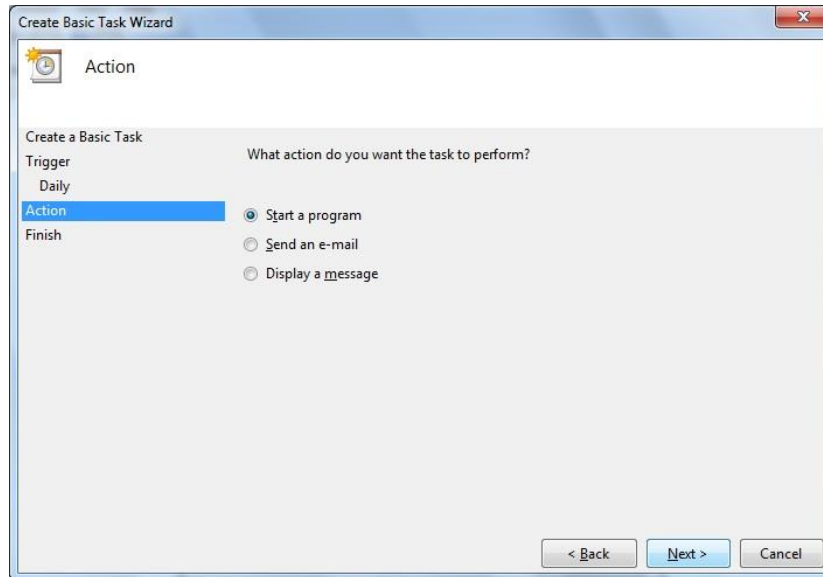
5. Click the radio button next to “Daily”, then click Next.



6. For Start Time, set the time to 11:00:00 PM, then click Next.



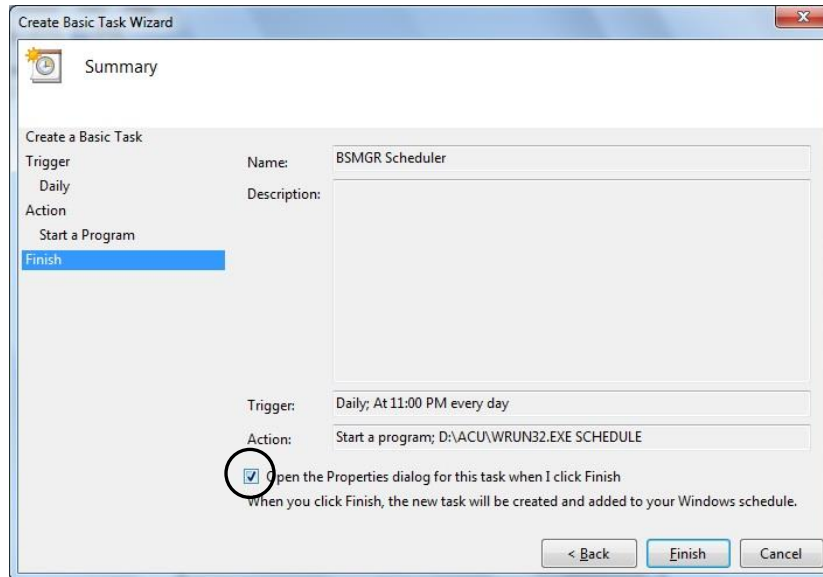
7. Click the radio button next to “Start a program”, then click Next.



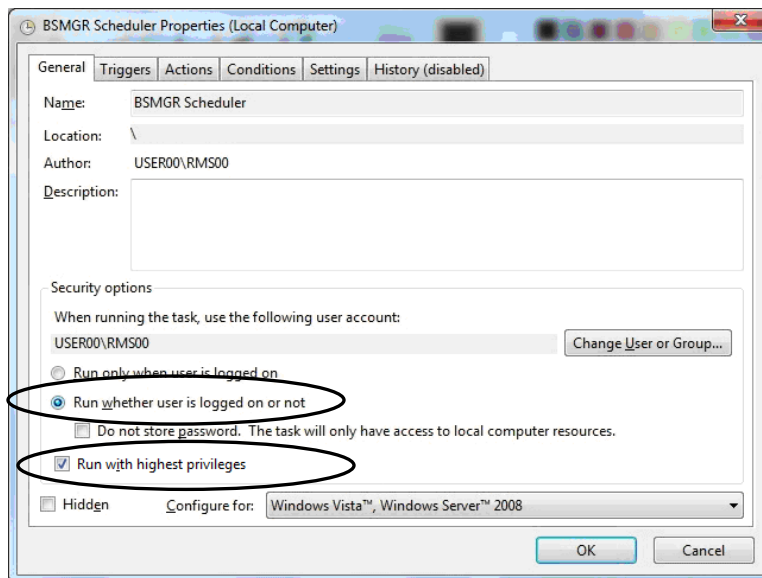
8. Under “Program/script”, type D:\ACUWRUN32.EXE (assumes BSM is on D:).
  - a. Next to “Add arguments (optional)”, type SCHEDULE.
  - b. Next to “Start in (optional)”, type D:\BOOK.
9. Click Next.



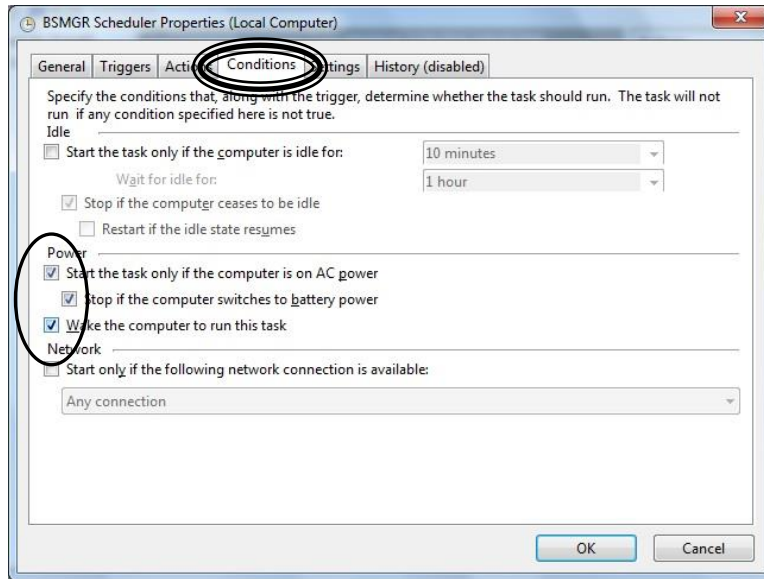
10. Check the box next to “Open the Properties dialog for this task when I click Finish”.



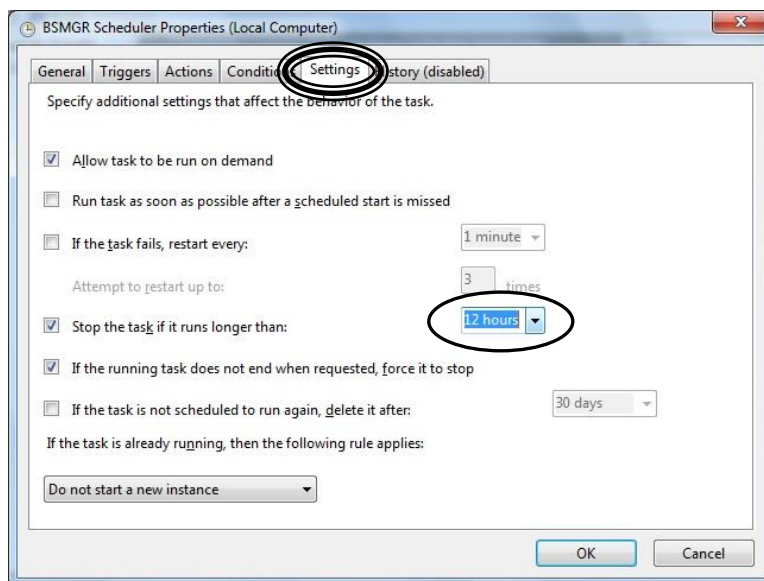
11. Click the radio button next to “Run whether user is logged on or not” and also check the box “Run with highest privileges”.



12. Click on the “Conditions” tab.
  - a. Check the 3 boxes under Power.
    - i. Start the task only if the computer is on AC power.
    - ii. Stop if the computer switches to battery power.
    - iii. Wake the computer to run this task.



13. Click the “Settings” tab.
  - a. Click the drop down box next to “Stop the task if it runs longer than:” and select 12 hours.
14. Click OK.



15. If you are prompted for your user name and password, enter it and press OK. The user account must have a password to run a scheduled task, and the user must be an Administrator (have Administrative privileges).



16. You should now see the BSMGR Scheduler listed.

